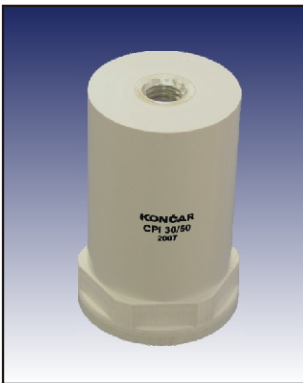


# **POTPORNI IZOLATORI**

---

# **SPACING INSULATORS**



**CPI 20**

**CPI 30**

**SAeb  
SBeb**



## OPIS

Potporni izolatori tipskih oznaka CPI 20, CPI 30, SAeb i SBeb namijenjeni su za unutarnju montažu u niskonaponskim električnim postrojenjima, distribuciji, industriji i brodogradnji.

Tijelo izolatora izrađeno je od visokokvalitetnog duroplasta - poliester pojačan sa staklom tako da se izolatori mogu koristiti i u tropskim uvjetima.

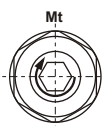
Materijal tijela izolatora ima otpornost na puzajuće struje CTI > 600 prema normi IEC 60112 i stupanj samogasivosti V0 prema normi UL94.

Priključni dijelovi su pocinčane čelične matice koje omogućavaju jednostavnu ugradnju izolatora.

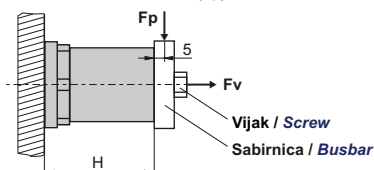
Izolatori se mogu koristiti kod temperatura okoline od -40°C do 130°C.

Električne karakteristike su u skladu sa normama IEC 62231, IEC 60168 i IEC 60660.

### ISPITIVANJE PRIJELOMNOG TORZIONOG MOMENTA (Mt) TESTING OF BREAKING TWIST STRESS (Mt)



### ISPITIVANJE PRIJELOMNE POPREČNE SILE (Fp) I PRIJELOMNE VLAČNE SILE (Fv) TESTING OF BREAKING CANTILEVER STRESS (Fp) AND BREAKING TENSILE STRESS (Fv)



## DESCRIPTION

The spacing insulators with type designation CPI 20, CPI 30, SAeb and SBeb are intended for indoor installation in electrical equipment, distribution, industry and ship-building.

The insulator body is made of high-quality thermo-setting plastic material - polyester reinforced with fiberglass.

This material is tropic and termite resistant.

Material of the insulator body has leakage current resistance - CTI > 600 to standard IEC 60112 and level flammability V0 to standard UL94.

The connection parts are zinc-plated steel female-threads which enables easy mounting.

The insulators are available in ambient air temperature -40°C to 130°C.

Electrical characteristics are in accordance with standards IEC 62231, IEC 60168 and IEC 60660.

## TEHNIČKI PODACI / TECHNICAL DATA

### Električne i mehaničke karakteristike / Electrical and mechanical characteristics

Tip Type	Pogonski napon Operating voltage (V)	Podnosivi napon Power-frequency withst. voltage 1 min.; 50Hz (kV a.c.)	Prob. površinski napon Surface flashover voltage (kV a.c.)	Izolacijski otpor Insulation resistance (M)	Prijelomna poprečna sila Breaking cantilever stress Fp (N)	Prijelomni torzioni moment Breaking twist stress Mt (Nm)	Prijelomna vlačna sila Breaking tensile stress Fv (N)		
CPI 20/16	230	3	10	> 4 x 10 <sup>5</sup>	2200	15 - 25	2500 - 3500		
CPI 20/20	400	3	25		2200				
CPI 20/25	500	5	30		2000				
CPI 20/30	690	5	25		2000				
CPI 20/35	690	8	35		1500				
CPI 20/40	690	8	>40		1500				
CPI 20/45	800	8	>40		1000				
CPI 20/50	800	10	>40		1000				
CPI 20/55	1000	10	>40		1000				
CPI 20/60	1000	15	>40		1000				
CPI 20/65	1500	15	>40		750				
CPI 20/70	1500	15	>40		750				
CPI 30/30	690	8	25		4500			30 - 40	5500 - 7000
CPI 30/35	800	10	30		3000				
CPI 30/40	1000	10	35		2000				
CPI 30/45	1000	15	38		1500				
CPI 30/50	1500	15	>40		1500				
CPI 30/55	1500	15	>40		1500				
CPI 30/60	1500	20	>40	1000					
CPI 30/65	1500	20	>40	1000					
CPI 30/70	1500	20	>40	1000					
SAeb 1/30	800	8	>40	2000	20 - 25	3500 - 4500			
SAeb 1/45	1000	15	>40	2000	60 - 65	7500 - 8500			
SAeb 1	1000	10	35	2000	110 - 120	5500 - 6500			
SBeb 1,5/60	3600	15	>40	6000	150 - 160	9500 - 12000			

Tolerancija prijelomne čvrstoće : ± 10 % / Tolerance of breaking charges : ± 10 %.

Pogonska poprečna sila ne smije biti veće od 40 % prijelomne poprečne sile / Operating breaking charge has not to be higher than 40 % of the breaking cantilever stress.

## PREGLED IZVEDBI / TYPES OVERVIEW

### CPI 20



Tip Type	Visina Height ( mm )	Pogonski napon Operating voltage ( V )	Priključni navoj Connection thread		Masa Weight (kg/kom)	Pakovanje Packing (kom/pc)
			Standardno Standard	Na zahtjev On request		
CPI 20/16	16	230	M6	M4/M5/M8	0,017	
CPI 20/20	20	400	M6	M4/M5/M8	0,022	
CPI 20/25	25	500	M6	M5/M8	0,026	
CPI 20/30	30	690	M6	M5/M8	0,031	
CPI 20/35	35	690	M6	M5/M8	0,035	
CPI 20/40	40	690	M6	M5/M8	0,038	
CPI 20/45	45	800	M6	M5/M8	0,041	
CPI 20/50	50	800	M6	M5/M8	0,045	
CPI 20/55	55	1000	M6	M5/M8	0,047	
CPI 20/60	60	1000	M6	M5/M8	0,050	
CPI 20/65	65	1500	M6	M5/M8	0,052	
CPI 20/70	70	1500	M6	M5/M8	0,056	

### CPI 30



Tip Type	Visina Height ( mm )	Pogonski napon Operating voltage ( V )	Priključni navoj Connection thread		Masa Weight (kg/kom)	Pakovanje Packing (kom/pc)
			Standardno Standard	Na zahtjev On request		
CPI 30/30	30	690	M8	M6/M10	0,056	
CPI 30/35	35	800	M8	M6/M10	0,060	
CPI 30/40	40	1000	M8	M6/M10	0,068	
CPI 30/45	45	1000	M8	M6/M10	0,076	
CPI 30/50	50	1500	M8	M6/M10	0,084	
CPI 30/55	55	1500	M8	M6/M10	0,092	
CPI 30/60	60	1500	M8	M6/M10	0,100	
CPI 30/65	65	1500	M8	M6/M10	0,108	
CPI 30/70	70	1500	M8	M6/M10	0,113	

### SAeb, SBeb



Tip Type	Visina Height ( mm )	Pogonski napon Operating voltage ( V )	Priključni navoj Connection thread	Masa Weight (kg/kom)	Pakovanje Packing (kom/pc)
SAeb 1/30	30	800	M6	0,040	20
SAeb 1/45	45	1000	M8	0,130	20
SAeb 1	40	1000	M12	0,110	10
SBeb 1,5/60	60	3600	M12	0,290	10

Boja izolatora : siva - RAL 7035

Colour of the insulators : grey - RAL 7035

### OZNAKA ZA NARUČIVANJE / ORDER DESIGNATION

[A] - [B]

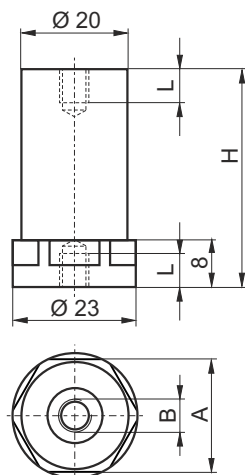
A - tip / type

B - priključni navoj - samo za tipove na zahtjev ( vidi Mjerne skice - str. 4 )

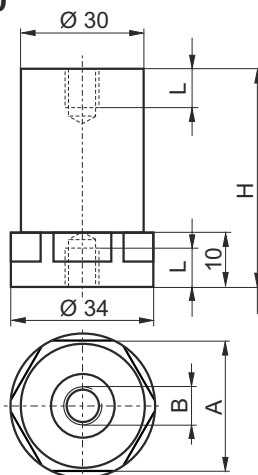
connection thread - only for types on request ( see Dimension drawings - page 4 )

Primjer / Example : CPI 30 / 40 - M10

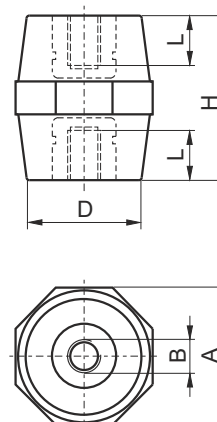
### CPI 20



### CPI 30



### SAeb, SBeb



Tip Type	H (mm)	A (mm)	L (mm)	D (mm)	B	
					Standardno Standard	Na zahtjev On request
CPI 20/16	16	21	4		M6	M4/M5/M8
CPI 20/20	20	21	6		M6	M4/M5/M8
CPI 20/25	25	21	8		M6	M5/M8
CPI 20/30	30	21	10		M6	M5/M8
CPI 20/35	35	21	10		M6	M5/M8
CPI 20/40	40	21	10		M6	M5/M8
CPI 20/45	45	21	10		M6	M5/M8
CPI 20/50	50	21	10		M6	M5/M8
CPI 20/55	55	21	10		M6	M5/M8
CPI 20/60	60	21	10		M6	M5/M8
CPI 20/65	65	21	10		M6	M5/M8
CPI 20/70	70	21	10		M6	M5/M8
CPI 30/30	30	31	8		M8	M6/M10
CPI 30/35	35	31	10		M8	M6/M10
CPI 30/40	40	31	10		M8	M6/M10
CPI 30/45	45	31	10		M8	M6/M10
CPI 30/50	50	31	15		M8	M6/M10
CPI 30/55	55	31	15		M8	M6/M10
CPI 30/60	60	31	15		M8	M6/M10
CPI 30/65	65	31	15		M8	M6/M10
CPI 30/70	70	31	15		M8	M6/M10
SAeb 1/30	30	30	10	Ø20	M6	
SAeb 1/45	45	41	16	Ø30	M8	
SAeb 1	40	41	12	Ø35	M12	
SBeb 1,5/60	60	50	22	Ø40	M12	

## KONČAR - NISKONAPONSKE SKLOPKE I PREKIDAČI d.o.o.

Borongajska cesta 81b  
HR - 10002 Zagreb, Croatia  
p.p. 209

Tel : +385 (0)1 2369 288, 2369 289  
Fax : +385 (0)1 2305 606  
E-mail : prodaja@koncar-nsp.hr

Tel : +385 (0)1 2369 245, 2369 291  
Fax : +385 (0)1 2318 918  
E-mail : export@koncar-nsp.hr