



## PRODUCT RANGE & TYPE SURVEY

### ELECTRIC POWER TRANSMISSION

Metal clad, gas-insulated high voltage switchgear GIS 72,5 – 145 kV

High voltage SF6 circuit breakers 72.5 kV – 145

Disconnectors & earthing switches 72.5 – 420 (123 – 420 kV)

#### Series K8D.6 - N



#### Series 8E1



#### Series CB-N2 Series Z



### ELECTRIC POWER PRIMARY DISTRIBUTION

Gas-insulated switchgear with busbar system in SF6 gas – 24 kV, 2500 A

Gas-insulated switchgear with insulated busbar systems in air 24–38 kV, 1250 A

Medium voltage air-insulated switchgear up to 38 kV

#### Series KSMV



#### Series KSMA



#### Series BVK



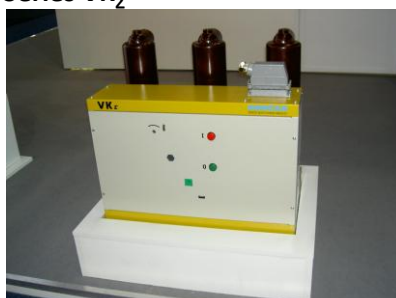
Vacuum circuit breakers 12 (7,2) kV – 38 kV, up to 2500 A

Vacuum circuit breakers 12 – 38 kV intended for installation in air-insulated switchgear series BVK

#### Series VK



#### Series VK<sub>2</sub>



## ELECTRIC POWER SECONDARY DISTRIBUTION

Ring main units 24 kV / 16 kA / 630 A

Extendable gas-insulated switchgear for secondary distribution, with or without metering

Prefabricated transformer substations

**KTS – up to 1000 kVA**

**VTS – up to 630 kVA**

**VTSK – up to 250 kVA**

**Series VDA i VDA<sub>Σ</sub>**



**Series VDAP**



## LOW VOLTAGE SWITCHGEAR AND SPECIAL PRODUCTS

With fixed or draw-out apparatus groups up to 7000 A

Switchgear assemblies for power-factor correction – up to 720 kVAR

Special products in accordance with customer's requests

Example:

Four-pole disconnectors 7,2 kV with air-blast drives

**Series VMF and VMI**



**Series VMF-k**



## LOW VOLTAGE APPARATUS

Fuse links

Fuse bases

Fuse switch dissonnectors

**Series gG, aM, gR, aR**

**Fuse links for railway networks**



**Series OS**



## EQUIPMENT FOR RETROFIT AND RENEWAL OF EXISTING SWITCHGEAR

---

Vacuum circuit breakers on draw-out trucks, for installation in existing switchgear series Or1P, KONČAR, as replacement for minimum-oil circuit breakers

**Series OR1p**



Medium voltage disconnectors 12 – 38 kV for indoor installation

**Series RU**



Medium voltage disconnector-switches 12 – 24 kV for indoor installation

**Series RSN**



## OPERATING MECHANISMS FOR MEDIUM VOLTAGE APPARATUS

---

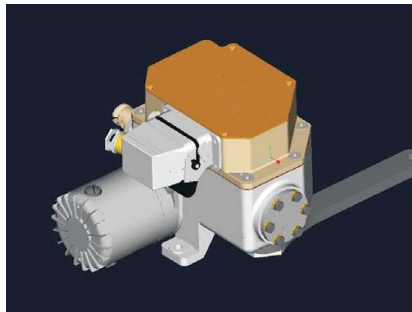
Toggle joint mechanisms for disconnectors and disconnector switches

**Series S5 and S15**



Electric motor drives for disconnectors and disconnector switches

**Series EMP-25**



Air-blast drives for disconnectors and disconnector switches (retrofit only)

**Series Zp**



## MEDIUM VOLTAGE INSULATORS

---

Indoor post insulators

**Series JOr (12-38 kV)**



Indoor bushings

**Series DBe (12-38 kV)**



Indoor bus-duct insulators

**Series PISL (12-38 kV)**



## OTHER PRODUCTS

---

Vacuum contactors for three-phase electric motors, transformers and capacitor batteries, 7,2 kV

### Series VS



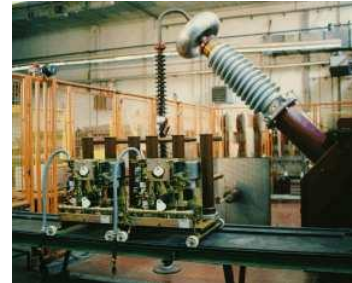
Insulated busbar systems 12-38 kV, for indoor installation, up to 2500 A

### Series IS



## SERVICE AND MAINTENANCE OF ALL PRODUCTS

---



- Service and maintenance of all products - in our own workshops or on site
- Sale and delivery of spare parts
- Renovation and remodeling (retrofit) of older generations of appliances and switchgear
- Busbridges and insulated busbar systems designed according to customer requirements
- On request - education and training of employees of other legal entities to maintain our products they use

Contact:

KONČAR – Switchgear Inc.  
Borongajska cesta 81c, 10000 Zagreb  
Tel. + 385 (0) 1 23 80 000  
Fax. + 385 (0) 1 23 31 058  
e-mail: [prodaja@koncar-ap.hr](mailto:prodaja@koncar-ap.hr)  
e-mail – administration: [uprava@koncar-ap.hr](mailto:uprava@koncar-ap.hr)  
Website: [http: www.koncar-ap.hr](http://www.koncar-ap.hr)

Zagreb, 05/2021